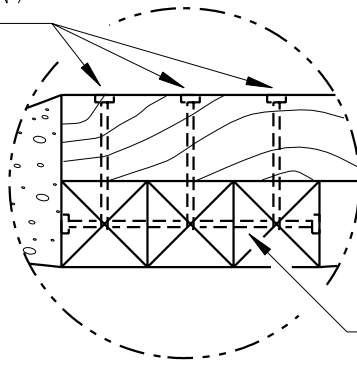
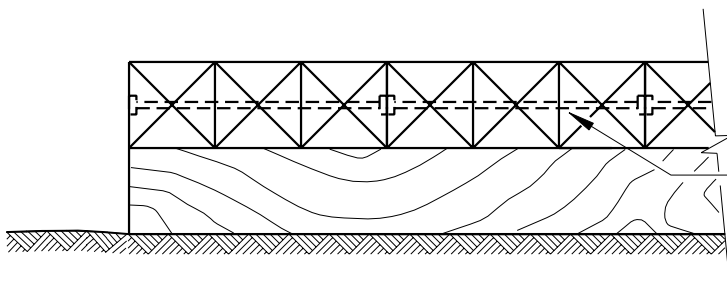


3/4" X 1'-6" LAG SCREWS
(SPACED AS SHOWN ON PLAN)
W/ COUNTERSUNK HEADS.



12" x 12" TREATED OAK TIMBERS
W/ 3/4" THRU BOLTS @ 3'-0" CENTER
TO CENTER W/ COUNTERSUNK HEADS

DETAIL "A"



3/4" THRU BOLTS @ 4'-0" C.C.
W/ COUNTERSUNK HEADS,
WASHER & NUT BOLTING (3)
12" x 12" TIMBER SECTIONS

SECTION "1-1"

NOTES:

1. CONTRACTOR SHALL VERIFY THE PIPELINE HAS 3'-0" (MIN.) COVER.
2. CONTRACTOR SHALL MAINTAIN A 1'-0" (MIN.) AIR SPACE BETWEEN THE GROUND AND THE TIMBER BRIDGE.
3. IF ADJACENT BRIDGES ARE REQUIRED TO PROTECT MULTIPLE PIPELINES THEN THE CONTRACTOR SHALL FILL THE SPACE BETWEEN THE BRIDGES WITH ASTM C-33, SIZE NO. 2 OR 3 COARSE AGGRREGATE (1" - 2 1/3"), OVER FILTER FABRIC (EXXON GTF-200 OR COMPANY APPROVED EQUAL).
4. COMPANY INSPECTOR SHALL DETERMINE THE EXISTING OAK TIMBER MATERIAL CONDITION.
5. THE BRIDGE IS DESIGNED FOR A MAXIMUM TRUCK GROSS WEIGHT OF 50 TONS (TANDEM AXLE) OR FOR A MAXIMUM AXLE LOAD OF 16 TONS USING SELECT STRUCTURAL TIMBER.
6. ALL LAG SCREWS SHALL BE PLACED ON TIMBER CENTERLINE.



STANDARD ENCROACHMENT DETAILS
FOR TEMPORARY TIMBER BRIDGE TO
CROSS SSCGP'S PIPELINE

REV.	DATE	BY	DESCRIPTION	APP	SCALE: 1" = 1'-0"
0	05-05-2004	GLS	ORIGINAL ISSUE	RDH	P.I.N.
1	11-05-2007	JAK	REPLACED STD. DWG. 005-002-A-0211	RDH	DWG. NO.
					STD-ENC-X-TTB2

DRAWN BY: GLS	DATE: 05-05-2004
CHECKED BY:	DATE:
APPROVED BY: RDH	DATE: 05-18-2004